



THE SHOPS AT RAPID CITY
811 DISK DRIVE, SUITE 1
RAPID CITY, SD 57701

FOR LEASE \$16.91/SF/YR NNN



RETAIL/OFFICE SPACE FOR LEASE—1,662 SF

KW Commercial

Your Property—Our PrioritySM

2401 West Main Street, Rapid City, SD 57702

605.335.8100 | www.RapidCityCommercial.com

Keller Williams Realty Black Hills

EXCLUSIVELY LISTED BY:

Gina Plooster

Leasing Agent

605.519.0749

gina@rapidcitycommercial.com

Chris Long, SIOR, CCIM

Commercial Broker

605.939.4489

chris@rapidcitycommercial.com

SUMMARY

LEASE INFORMATION

SUITE 1

Suite Size:	1,662 SF
Lease Rate:	\$16.91/SF/YR
Est. NNN:	\$4.17/SF/YR
Monthly Rent:	\$2,919.58

PROPERTY OVERVIEW

Retail strip center near I-90/Haines exit. High traffic shopping area in the vicinity of national retailers - Petsmart, Kohl's, Lowe's, Best Buy and chain restaurants - Chili's, Applebee's. Easy commute between Box Elder/Ellsworth Air Force Base to the east and Black Hawk/Summerset to the west.

PROPERTY HIGHLIGHTS

- ▶ Suite 1 - End cap suite has 5 offices, 2 restrooms, 4 changing rooms, a laundry room/staff room, storage space, exposed ceilings, and a welcoming reception with space for a waiting area
- ▶ Signage visible from I-90 (over 30,000 vehicles per day)
- ▶ Ideal fit for retailers, professional offices, or health services
- ▶ Large storefront windows
- ▶ Large parking lot for clients and tenants



EXCLUSIVELY LISTED BY:

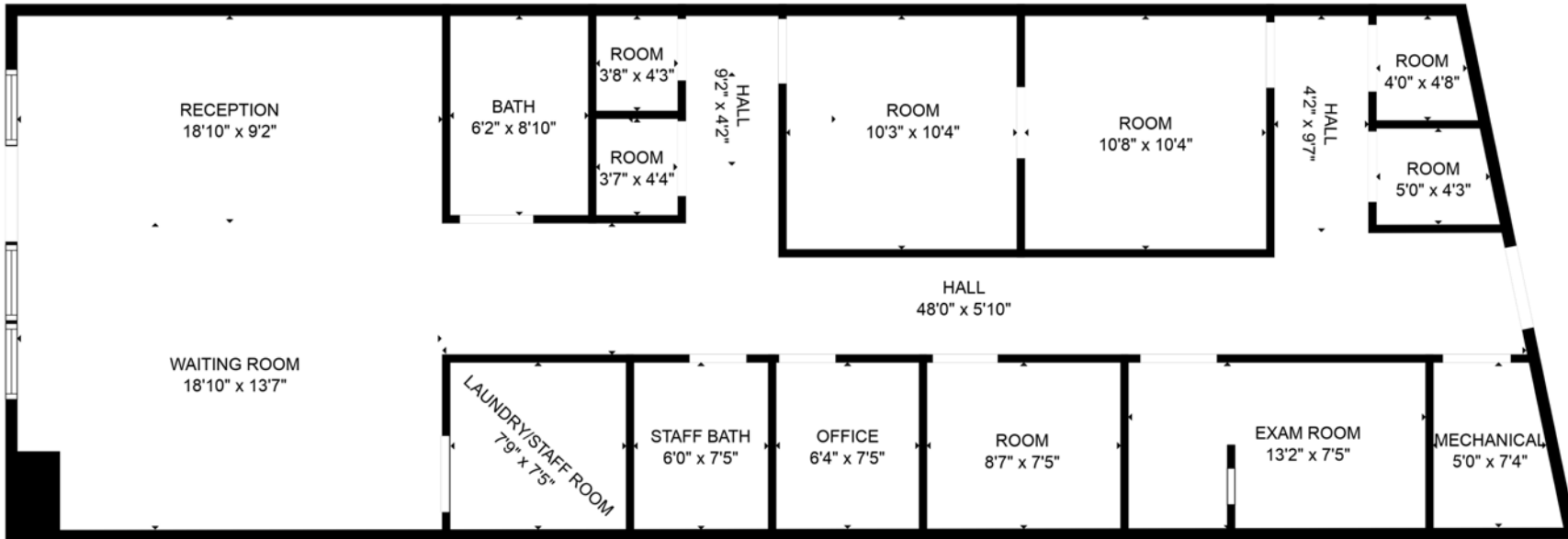
Gina Plooster
Leasing Agent
605.519.0749
gina@rapidcitycommercial.com

Chris Long, SIOR, CCIM
Commercial Broker
605.939.4489
chris@rapidcitycommercial.com



THE SHOPS AT RAPID CITY | 811 DISK DRIVE
RAPID CITY, SD 57701

FLOOR PLAN - SUITE 1



EXCLUSIVELY LISTED BY:

Gina Plooster

Leasing Agent

605.519.0749

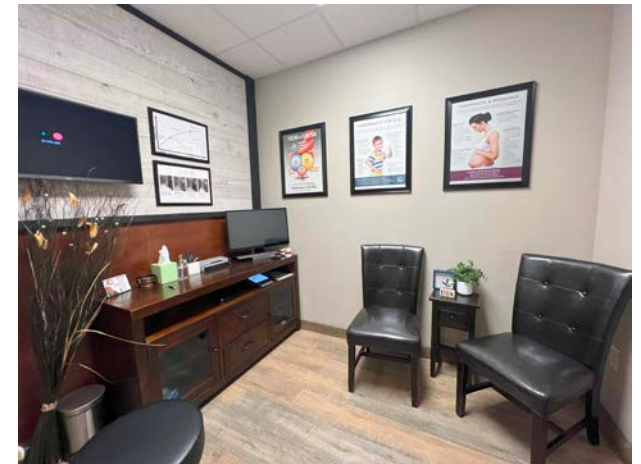
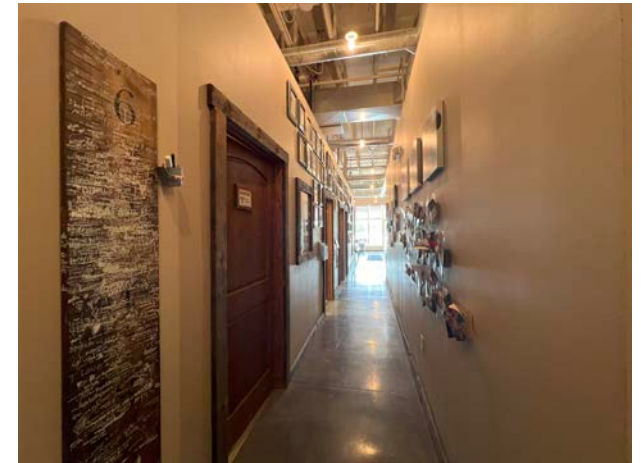
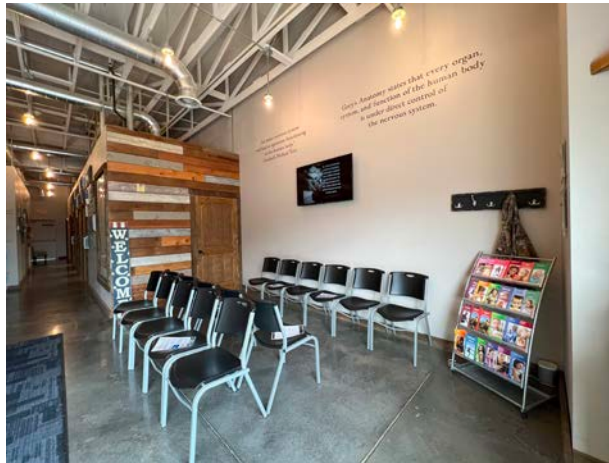
gina@rapidcitycommercial.com

Chris Long, SIOR, CCIM

Commercial Broker

605.939.4489

chris@rapidcitycommercial.com



EXCLUSIVELY LISTED BY:

Gina Plooster

Leasing Agent

605.519.0749

gina@rapidcitycommercial.com

Chris Long, SIOR, CCIM

Commercial Broker

605.939.4489

chris@rapidcitycommercial.com



STATISTICS

WELCOME TO SOUTH DAKOTA AND THE BLACK HILLS!

The Mount Rushmore State of South Dakota has carved a solid reputation for business friendliness. It is consistently ranked in the top five states for setting up and conducting business. Small and big companies alike are discovering South Dakota's central location and progressive business climate.

The Black Hills boasts the country's most recognized national monument - Mt. Rushmore - bringing millions of tourists from all over the world to Western South Dakota every year. For the past 9 years, South Dakota tourism has posted an increase in visitation, visitor spending and overall impact on the state's economy with 14.4 million visitors to South Dakota, \$4.7 billion in visitor spending, and 56,826 jobs sustained by the tourist industry.

BUSINESS FRIENDLY TAXES	
NO	corporate income tax
NO	franchise or capital stock tax
NO	personal property or inventory tax
NO	personal income tax
NO	estate and inheritance tax



REGIONAL STATISTICS	
Rapid City PUMA Population	189,754
Rapid City Population Growth	1.46% YoY
Rapid City Unemployment Rate	2.3%
PUMA Median Income	\$57,977

SD TOURISM 2021 STATISTICS		
Room nights	↑	33%
Park Visits	↑	11%
Total Visitation	↑	28%
Visitor Spending	↑	28%

RAPID CITY

- #1 Outdoor Life–Best hunting and fishing town
- #4 CNN Money–Best Place to Launch a Business
- #4 Wall Street Journal–Emerging Housing Markets
- #4 WalletHub–Best Places to rent
- #11 Forbes–Best Small City for Business
- #16 Top 100 Best Places to Live

SOUTH DAKOTA

- #1 Best State for Starting a Business
- #1 America's Friendliest State for Small Business
- #2 Best State for Small Business Taxes
- #2 Best Business Climate in the US
- #2 Best State for Quality of Life
- #2 Best State for Overall Well-Being and Happiness
- #2 Business Tax Climate by the Tax Foundation
- #3 US News Fiscal Stability 2019 list
- #3 Small Business Policy Index 2018 list